

# Supporting Documents for Qualitative Metric 4.3.1



**Submitted to NAAC**

**By**

**Gandhi Institute For Technology (GIFT),**

**Bhubaneswar**

## **Criterion 4 - Infrastructure and Learning Resources**

### **4.3 IT Infrastructure**

#### **4.3.1 Institution frequently updates its IT facilities including Wi-Fi**

##### **Descriptions on IT facilities**

The IT facilities available in our college can be summarized as follows,

##### **LAN Facility**

There are 38 data network switches (Giga byte), 18 POE network switches for access points, CCTV cameras. 110 Mbps of internet connectivity is shared across the campus, where 100 Mbps is shared for the students.

##### **Server configurations in data center**

There are 02 servers with Xeon E-5 version-2, 16 GB RAM, 1.0 TB hard drive, which are served as Domain Controller (DC), Additional Domain Controller, student biometric server, faculty biometric server and application servers.

Back up device- 2TB for critical server back up

##### **Workstation**

712 desktops are provided to all department labs with configurations of Pentium dual core i3 3 generation 4GB, 500GB hard disk with LAN connectivity. 80 desktops with configurations of core i3 4GB, 500GB and dual core 250GB, 2GB hard disks are available to carry out academic and administrative work.

##### **Software**

Windows 2008 server and windows 2011 multi point server available. We also use open source operating systems such as Fedora, Ubuntu and CentOS.

##### **Printers**

48 Laser jet printers, 4 Xerox centers and 5 scanners are provided across the campus for academic and administrative purposes.

##### **Updates and up gradation**

Updates are maintained regularly through WSUS (Windows Server Update Service) and anti viruses are updated through cloud portal. Ram has upgraded in 67 computers in 1GB to 2 GB.

##### **Wi-Fi**

24 Extendable Wi-Fi access points are placed in various places like Library, Corridors, Labs, Hostels, Canteen and Outdoor. Wi-Fi access is provided to all the students which is monitored and controlled by linux server at the IT department for secure content access. All access points are routed to a Wi-Fi controller in the Data Center where configuration and updates are maintained in a centralized fashion.

  
Principal  
Gandhi Institute for Technology  
Bhubaneswar



A comparison of IT facilities including Wi-Fi, in 2015-16 and 2019-20 can be summarized as follows:

Sl No	Items	2015-16	2016-17	2017-18	2018-19	2019-20
1	No. of Computers	410	451	519	607	712
2	Bandwidth	50Mbps	50Mbps	75Mbps	75Mbps	110Mbps
3	Desktop Configuration	Pentium 4	Celeron	Pentium M	Yonah	Dual Core
4	Accessories (Printers)	20	24	30	37	48

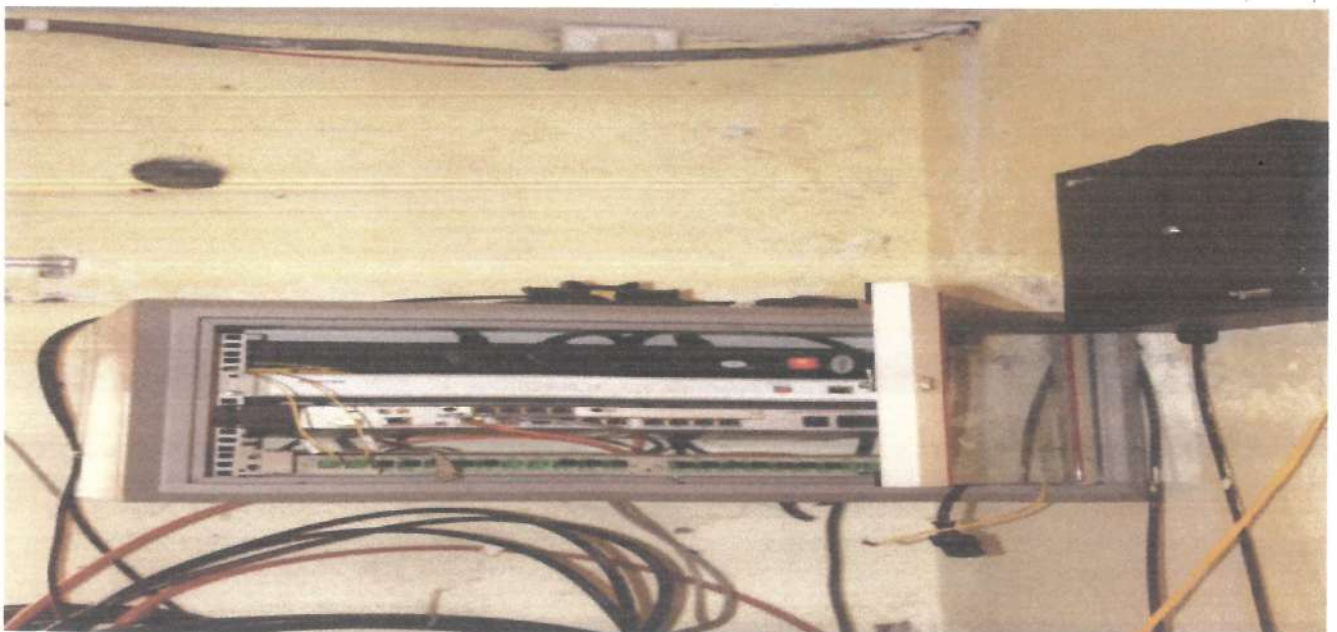


CCTV CAMERA-1

*A. V. S. Panigrahi*  
Principal  
Gandhi Institute for Technology  
Bhubaneswar



CCTV CAMERA-2



VODAFONE & JIO ISP

*A. S. Panigrahi*  
Principal  
Gandhi Institute for Technology  
Bhubaneswar





LADIES HOSTEL WI-FI ACCESSPOINT-1



LADIES HOSTEL WI-FI ACCESS POINT-2

*Chirpaan*  
Principal  
Gandhi Institute for Technology  
Bhubaneswar



BOYS HOSTEL WI-FI ACCESS POINT-1



BOYS HOSTEL WI-FI ACCESS POINT -2

*Dr. Suman*  
Principal  
Gandhi Institute for Technology  
Bhubaneswar





LADIES HOSTEL WI-FI ACCESS DISTRIBUTION SWITCH



JIO ISP PROVIDER

*Uc Sivan*  
Principal  
Gandhi Institute for Technology  
Bhubaneswar



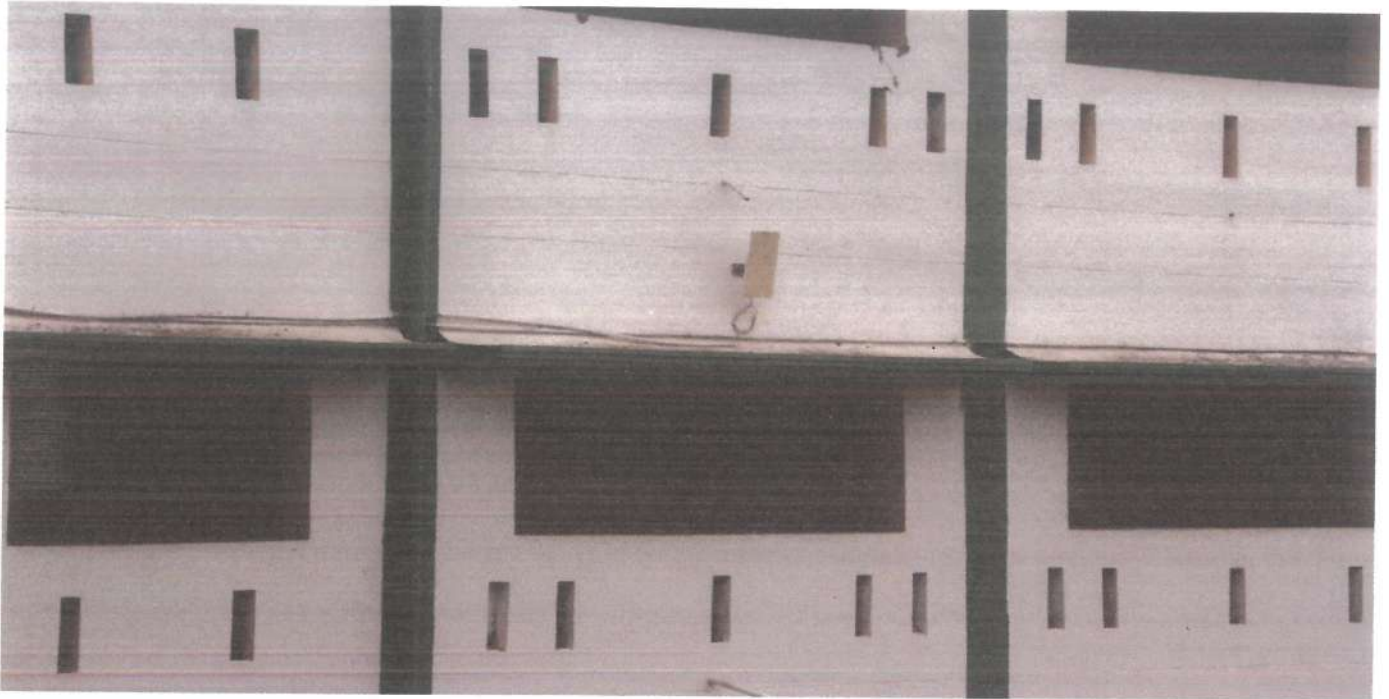
VODAFONE ISP PROVIDER



CAMPUS WI-FI ACCESS POINT -1

*U. S. Panigrahi*  
Principal  
Gandhi Institute for Technology  
Bhubaneswar



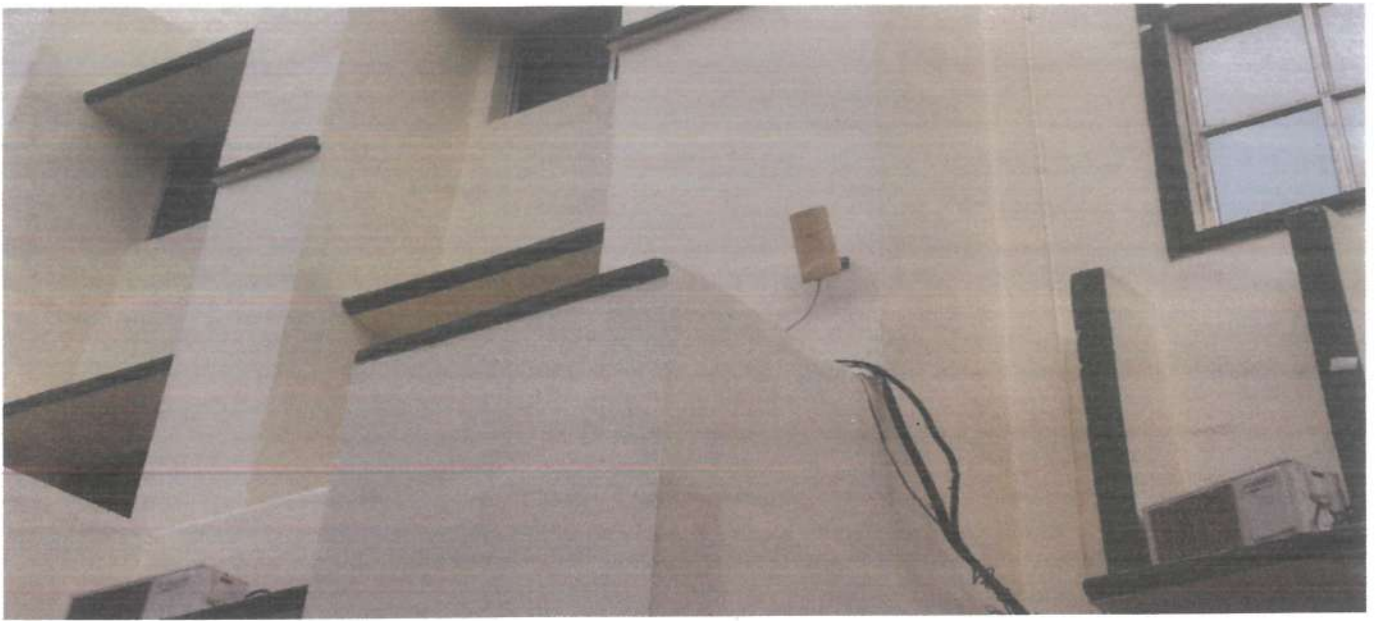


CAMPUS WI-FI ACCESS POINT -2



SEMINAR HALL WI-FI ACCESSPOINT

*Mr. Sparan*  
Principal  
Gandhi Institute for Technology  
Bhubaneswar



MAIN BUILDING WI-FI ACCESS POINT



ONLINE UPS (15 KVA)

*U. S. Panwar*  
Principal  
Gandhi Institute for Technology  
Bhubaneswar



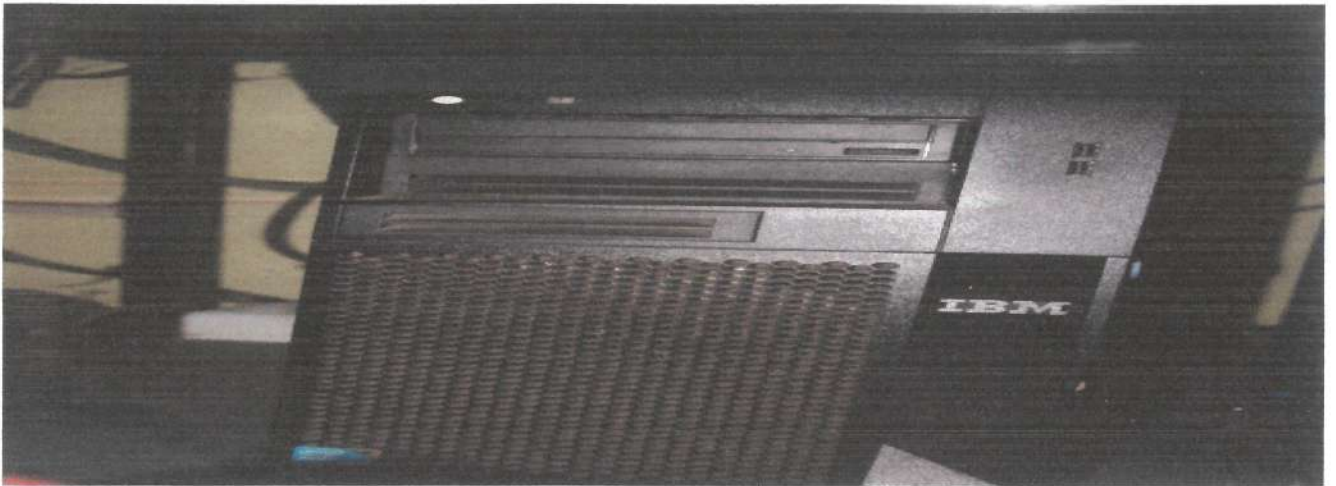


NETWORK SWITCH



NETWORK SWITCH

*Anuska*  
Principal  
Gandhi Institute for Technology  
Bhubaneswar

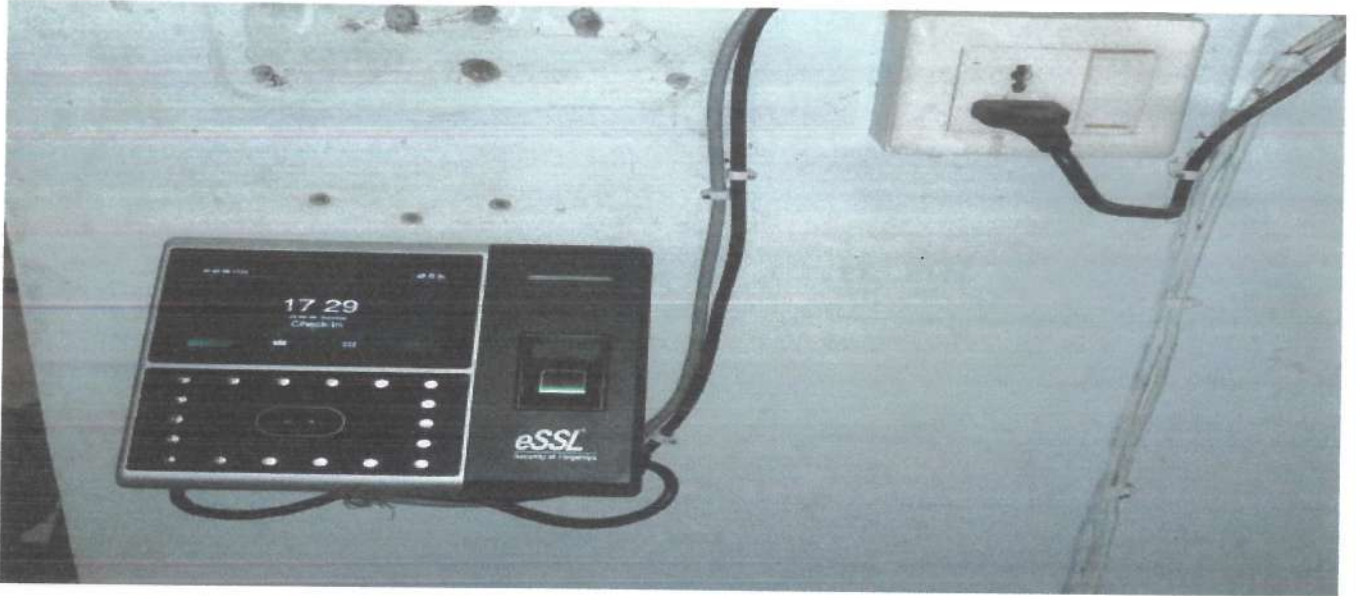


SERVERS



*ASV Sharma*  
Principal  
Gandhi Institute for Technology  
Bhubaneswar





STAFF BIO-METRIC & FACE ID DEVICE

*Uspaan*  
Principal  
Gandhi Institute for Technology  
Bhubaneswar